

若松駅前土地区画整理事業  
確定 図

5/14

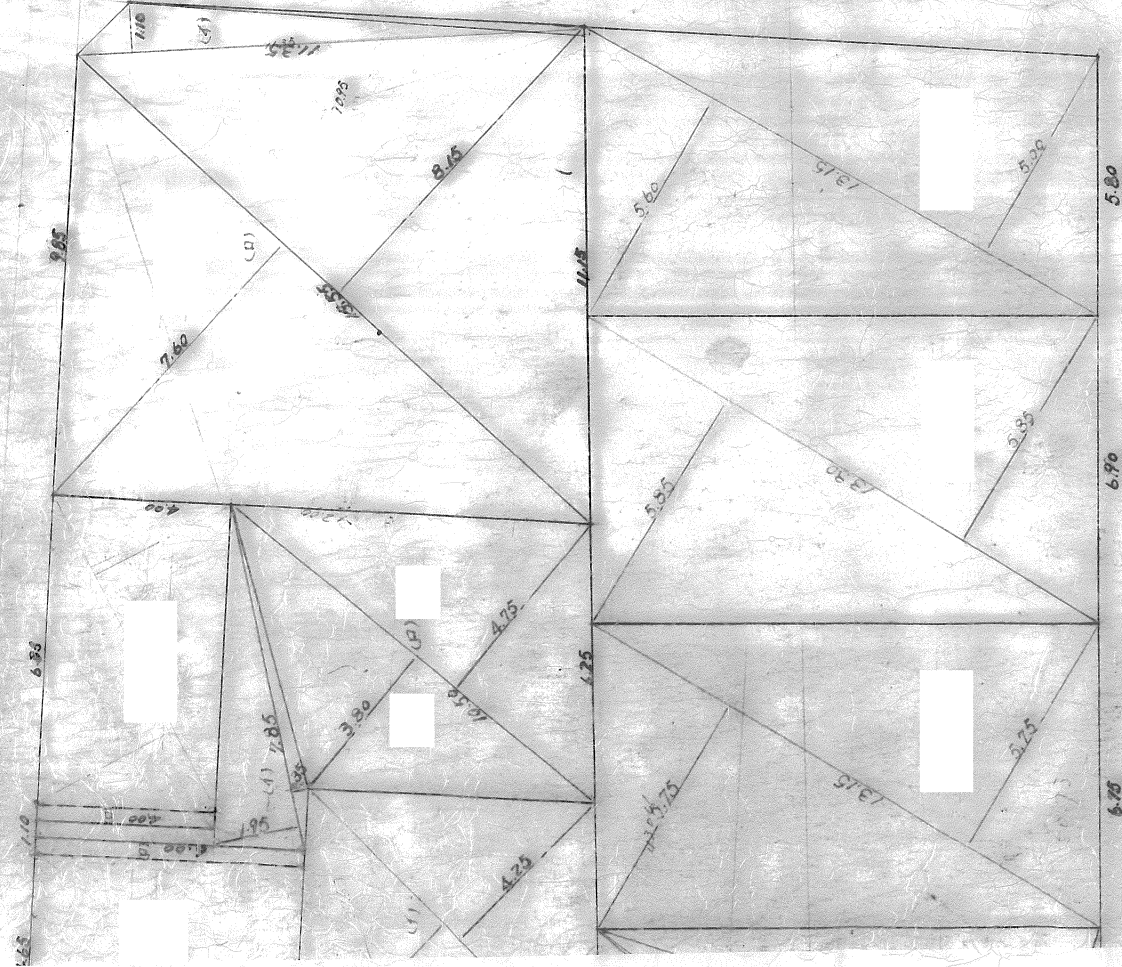
$0.685 \times 4.00 = 2.740$   
 $0.0366 \times 4.00 = 0.1464$   
 計 2.8864

$0.465 \times 6.00 = 2.790$   
 $0.0366 \times 6.00 = 0.2196$   
 計 3.0096

(1)  $7.85 (1.95 + 0.35) = 18.055$   
 (2)  $10.50 (3.85 + 4.75) = 89.775$   
 計 107.83  
 $= 94.53915$   
 $0.386 \times 4.00 = 1.544$   
 計 55.974

(4)  $11.35 \times 1.10 = 12.485$   
 (5)  $15.55 (7.60 + 8.15) = 244.9125$   
 計 257.3975  
 $= 128.69875$

2D-7面積  
 $11.35 \times 1.10 = 12.485$   
 $37.60 (12.55 + 10.95) = 885.600$   
 計 998.085  
 $= 771.44804$  ⑤ 109.64  
 $(248.04 - 146.95 = 109.09)$



$13.15 (5.15 + 5.75) = 151.225$   
 $13.30 (5.85 + 5.85) = 155.61$   
 $13.15 (5.60 + 5.00) = 139.59$   
 計 446.43

$7.6625$   
 $25$   
 $2.9125$   
 $4.55$